



**INTERNATIONAL FURNISHINGS & DESIGN ASSOCIATION
NORTHERN CALIFORNIA CHAPTER PRESENTS
2010 STUDENT CAREER FORUM DESIGN COMPETITION**

Residential Lighting Design

Prizes: 1st - \$500. 2nd - \$300. 3rd - \$200.

(In addition, each of the prize winners will receive a one-year IFDA student membership)

Design Requirements: Design the lighting for a single family dwelling in a suburban community in the San Francisco Bay Area for an empty-nest, 50 something, active, professional/retired couple. The space has 9 foot ceilings throughout. Other specific structural notes and required space plan are on the following pages. The 2005 (current) or 2008 (scheduled to be effective 1/1/2010) California Title 24 energy regulations must be incorporated in the lighting design plan and selection of lamps and luminaires. These standards are available at www.energy.ca.gov/title24. You need to include/specify, general, task, and ambient/decorative lighting.

Design Presentation: Present the design on no more than two boards, 18 in. x 24 in. each. All presentation material must be within this size on the front side only (electrical overlay is fine); entries with wings, extensive pull or fold outs, or other add-ons, as well as those deemed too thick (over ~ 1 ¼" total, including board thickness), will be disqualified. **All other requirements for the Student Career Forum Design Competitions (www.studentcareerforum.org) must also be adhered to or the entry will be disqualified.**

Criteria for entries:

Board One:

- Dimensioned floor plan (**must be to ¼" = 1' scale**), with furnishings arranged, rendered (black & white or color).
- Lighting/electrical/switching plan, ¼" = 1' scale (can be as an overlay), with symbol legend. Include both fixed & portable luminaires.
- Design concept statement that includes your specific client profile, not to exceed 250 words and which CA Title 24 requirements are followed.

Board Two:

- Specification schedule for luminaires (fixed and portable) including lamps (bulbs) selected; compliance with either the 2005 or 2008 CA Title 24 requirements verified and noted.
- Selected pictures of examples of luminaires (fixed and portable), minimum of 5.
- Representative color/finish examples for walls, floors, and furnishings that support lighting decisions and are appropriate for the client.

On either board:

- A rendered perspective of one of the areas that supports lighting and design decisions

Entries will be judged on:

- Presentation (neat, clear, well executed, rendered, complete)
- Accuracy and functionality (dimensioned, to scale floor plan, spatial/furniture plan, lighting/electrical plan)
- Evidence of incorporation / utilization of and compliance with 2005 or 2008 CA Title 24 Standards (included as part of specifications)
- Luminaire and lamp selection
- Design creativity and originality (use of space, color, and texture, appropriate for client)

Entries that deviate from any of these or the general Student Career Forum Design Competition guidelines will be disqualified (available at www.studentcareerforum.org/Compete/). The decision of the judges is final, including the decision to not award any or a specific placing if it is deemed by the judges that the criteria for such award placement is not met.

Entries must be sent individually and may be hand delivered, or sent via US Mail, UPS, or other courier, to arrive beginning Monday, February 8 and no later than 5pm on Friday, February 12, 2010.

Send your individual entry to:

(please address exactly as shown)

**Student Career Forum
c/o Lilley Yee Interiors
269 Delmar Way
San Mateo, CA 94403-2312**

Additional entry criteria: Entries limited to undergraduate students currently registered in Interior Design or closely related programs in California, Nevada, Oregon, Washington, or Utah. Entrants need to register to attend but do not need to be present to receive awards. Entries from other programs will not be judged and will not be returned. In a closed clasp-type envelope, securely attached to the back of **the first board**, enclose a completed and signed copy of the official Student Career Forum Registration form. Your name and that of your school should not be visible on the front or back of either board. The above rules must be followed to avoid being disqualified. Awards will be presented on Friday, March 5th. Projects must remain on display until the close of the event on Friday. Prize money will be given to the recipient only and at the close of the event on Friday. Entries may be picked up **between 5:00 and by 5:30 p.m. on Friday, March 5th. Entries not picked up are destroyed and will not be returned.**

For questions, contact Nancy Wolford, Ph.D., IFDA: e-mail - nlwolford@earthlink.net, or Joan Long, FIFDA: e-mail - h.joanlong@yahoo.com.

Structural notes: Locations of windows and doors, along with other structural elements (walls, kitchen and bath fixtures, etc.) **cannot** be changed, nor can interior living space be added.

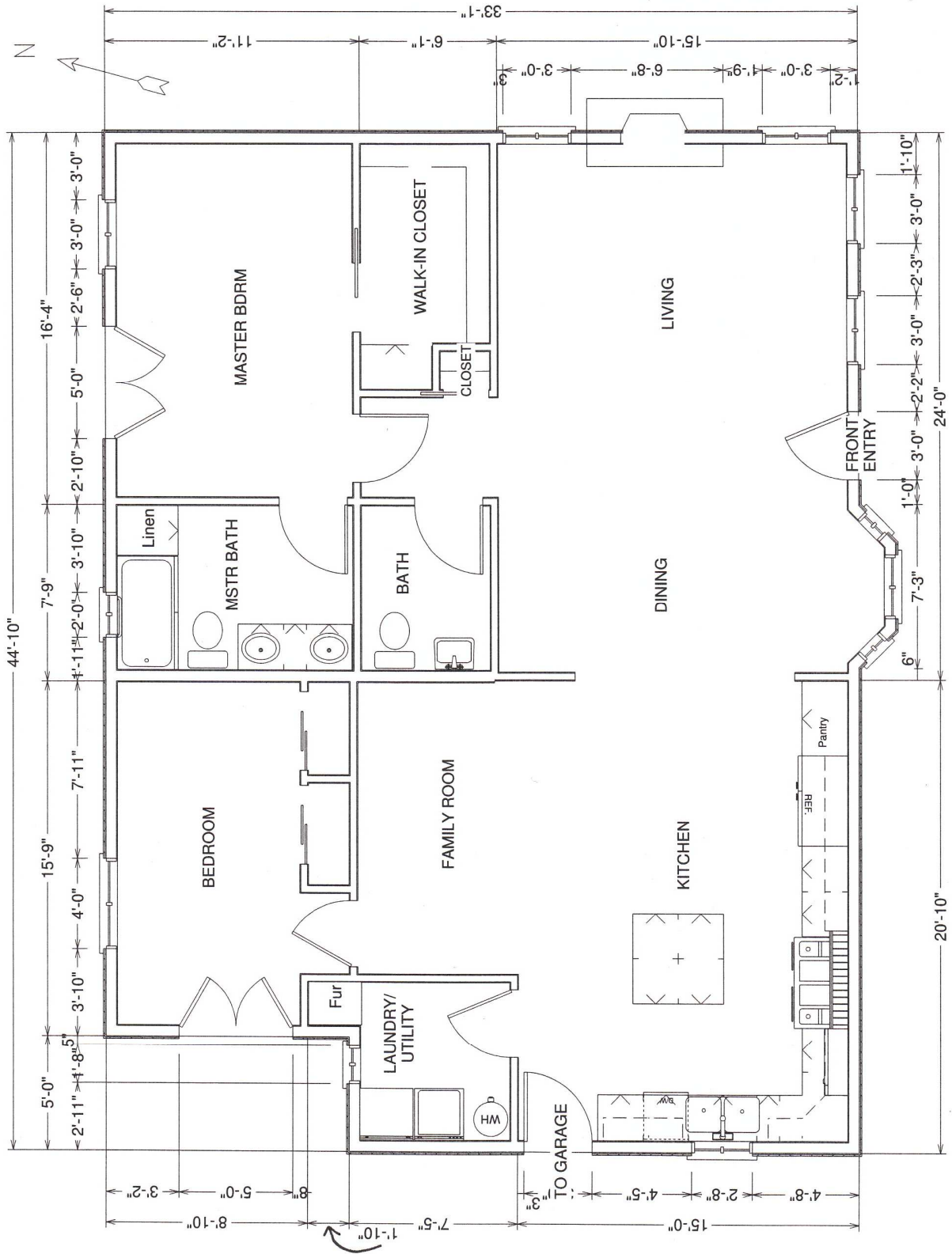
Wall thicknesses:

6" exterior and wet walls,

4" other interior walls

Window sill height in living, dining and bedrooms, 36" AFF, kitchen and utility, 44" AFF, bathroom, 60"

Plan **must** be drawn to ¼" = 1'0" scale



THIS DRAWING IS NOT TO SCALE

© 2009 IFDA Northern California Chapter, all rights reserved