



**2012 RESIDENTIAL LIGHTING DESIGN COMPETITION
SPONSORED BY THE NORTHERN CALIFORNIA CHAPTER
INTERNATIONAL FURNISHINGS & DESIGN ASSOCIATION**

Prizes: 1st - \$500. 2nd - \$300. 3rd - \$200.

(In addition, each of the prize winners will receive a one-year IFDA student membership)

Design Requirements: Design the lighting for a single family dwelling in a suburban community in the San Francisco Bay Area for a 30 something, professional couple, with no children. They enjoy cooking as a hobby and for small groups of friends and require a home office/computing space as they occasionally work at home. You may expand on their profile and needs for this space. Specific structural notes and required space plan are on the following pages. The 2008 California Title 24 energy regulations must be incorporated in the lighting design plan and selection of lamps and luminaires. These standards are available at www.energy.ca.gov/title24. You need to include/specify, general, task, and ambient/decorative lighting.

Design Presentation: **Present the design on one presentation board**, 18 in. x 24 in. **All presentation material must be within this size on the front side only (electrical overlay and layered/waterfall specification sheets are encouraged). Those presentation boards deemed too thick (over ~ 1 ¼" total, including board thickness) or unbalanced with too heavy samples (NO TILE or STONE samples allowed – mount good quality color copies) will be disqualified and not displayed.** All other requirements for the Student Career Forum Design Competitions must also be adhered to or the entry will be disqualified (<http://www.studentcareerforum.org/2011-competitions/>).

Criteria for entries:

Board Requirements:

- Dimensioned floor plan (**must be to ¼" = 1' scale**), with furnishings arranged, rendered (color is preferred).
- Lighting/electrical/switching plan, ¼" = 1' scale (as an overlay), with symbol legend. Include both fixed & portable luminaires.
- Design concept statement that also includes your specific client profile, not to exceed 150 words (no smaller than 10 point type).
- Specification schedule for luminaires (fixed and portable) including lamps (bulbs) selected; compliance with the 2008 CA Title 24 requirements must be calculated for the kitchen) and noted in the specifications that may be in a layered, waterfall, or fold-out format (no smaller than 10 point type, please).
- Selected pictures of luminaires (fixed and portable), (3 to 5).
- Representative color/finish examples for walls and floors (3 to 5) that support lighting decisions and are appropriate for the client.
- A color rendered perspective of a significant area that shows lighting and design decisions.

Entries will be judged on:

- Presentation (neat, clear, well executed, rendered, complete)
- Accuracy and functionality (dimensioned, to scale floor plan, spatial/furniture plan, lighting/electrical plan)
- Evidence of incorporation / utilization of and compliance with 2008 CA Title 24 Standards (show calculations for the kitchen in specifications)
- Luminaire and lamp selection

- Design creativity and originality (use of space, color, and texture, appropriate for client)

Entries that deviate from any of these or the general Student Career Forum Design Competition guidelines will be disqualified (available at <http://www.studentcareerforum.org/2011-competitions/>).

Please note: The decision of the judges is final, including the decision to not designate an award or any specific placing(s) if it is deemed by the judges that the criteria for such award placement is not met.

Entries must be sent individually and may be hand delivered, or sent via US Mail, UPS, or other courier, to arrive beginning Monday, February 6 and no later than 5pm on Wednesday, February 15, 2012.

Send your individual entry to:

(please address exactly as shown)

**IFDA Student Career Forum Design Competition
c/o Dr. Nancy Wolford
16171 Jasmine Way
Los Gatos, CA 95032**

Additional entry criteria: Entries limited to undergraduate students currently registered in Interior Design or closely related post-secondary programs in California, Nevada, Oregon, Washington, or Utah. Entrants need to register to attend the Student Career Forum but need not be present to receive awards. Entries from other programs, those students not currently registered, or those from masters/other programs or areas will not be judged and will not be returned. In a closed clasp-type envelope, securely attached to the back of the board, enclose a completed and signed copy of the official Student Career Forum Registration form (<http://www.studentcareerforum.org/2011-competitions/>). Your name and that of your school should not be visible on the front or back of the board. The above and general Student Career Forum competition rules must be followed to avoid being disqualified. Awards will be presented on Friday, March 2nd. Projects must remain on display until the close of the event on Friday. Prize money will be given to the recipient only and at the close of the event on Friday. Entries may be picked up **beginning at 5:00 and by 5:30 p.m. on Friday, March 2nd. Entries not picked up are destroyed and will not be returned.**

Structural and other notes: Locations of windows and doors, along with other structural elements (walls, kitchen and bath fixtures, etc.) **cannot** be changed, nor can interior living space be added. Wall thicknesses:

6" exterior and wet walls,

4" other interior walls

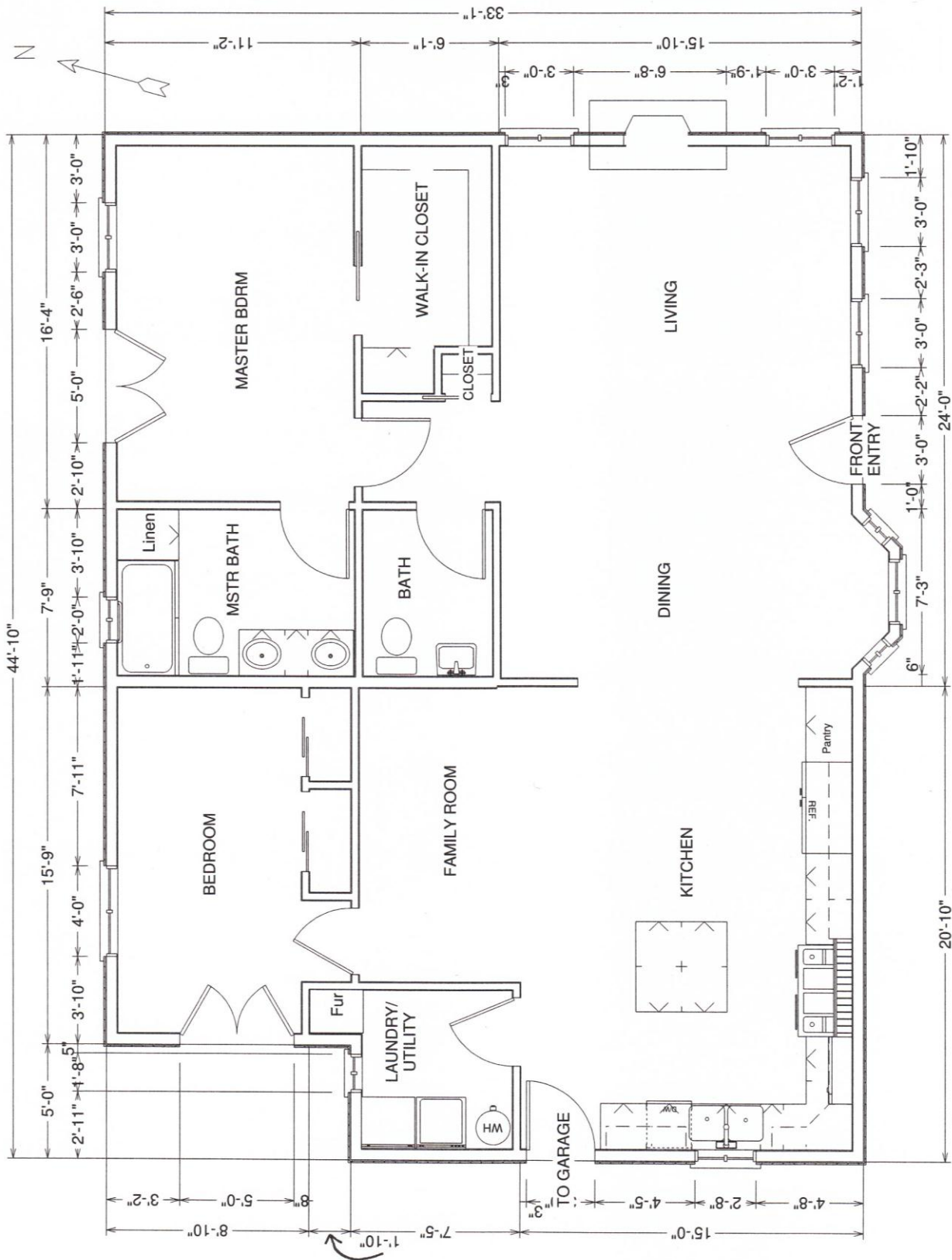
Ceiling height throughout is 9'

Window sill height in living, dining and bedrooms, 36" AFF, kitchen and utility, 44" AFF, bathroom, 60" AFF.

Plan may be hand or computer generated and **must** be drawn to and presented at 1/4" = 1'0" scale. Electrical overlay either clear acetate or sheer vellum.

Specification sheets must be on the front side of the board, and can be layered in a waterfall-type or fold-out format if necessary.

For questions, contact Nancy Wolford, Ph.D., IFDA: e-mail - nwolford@earthlink.net, or Joan Long, FIFDA: e-mail - hjoanlong@yahoo.com.



THIS DRAWING IS NOT TO SCALE