

**2012 STUDENT CAREER FORUM COMPETITION SPONSORED BY**  
**CALIFORNIA CAPITAL CHAPTER OF NKBA**

Entries will be judged by design professionals using the following criteria:

- Visual appeal, creativity, and the elements and principles of design
- Use of NKBA Graphics and Presentation Standards
- Compliance with the NKBA Kitchen Planning Guidelines and Access Standards
- Design solution demonstrating an understanding of space planning and safety issues
- Practicality of design and the use of appropriate materials and finishes
- Interpretation of the client's needs and the conditions of the job site.

Awards and prizes:      First place, \$500    Second Place, \$300    Third Place, \$150

Rules and requirements:

1. Entrants must be registered post-secondary students in an Interior Design or related program.
2. No identification of any kind may appear on the face of the drawings or concept boards. The registration form must be filled out, signed, and enclosed in a clasp-type envelope with the clasp facing out attached securely to the back of one of the boards.
3. Competition entry must include the following:
  - Floor plan of the master bedroom/bath/closet, showing furniture placement, drafted in ¼" scale.
  - Floor plan of the bathroom areas using NKBA Graphic and Presentation Standards fully dimensioned in ½" scale.
  - Mechanical / Lighting plan.
  - Elevation drawings of significant bathroom walls, fully dimensioned in ½" scale
  - Perspective view rendered in color or rendered elevations of all views (bathroom area only)
  - Samples of materials and finishes may be mounted on one of the concept boards. Color copies of finishes are acceptable. Boards that are too heavy to hang or if the samples are not securely fastened, will not be displayed at the event.
  - Design statement of 100 words or less.
4. Drawings may be manually drafted, or CADD drawings, but must meet NKBA graphic standards.
5. Full sized copies of original drawings may be submitted. Do not reduce size of scaled drawings.
6. All materials, statements, and drawings must be mounted a maximum of two boards no larger than 18" x 24".
7. You must submit with your entry registration form, a CD with a high-resolution (300dpi) photo image of your project board(s) or drawings. Label the CD with your name, school, and design competition. Each entry requires its own CD.
8. Oversized, heavy concept boards will be disqualified. Large packages containing multiple entries or with excessive packaging will not be accepted for delivery. Return of unaccepted or disqualified entries is not guaranteed.

Any questions regarding the information contained in this competition description should be made to [anetstarky@aol.com](mailto:anetstarky@aol.com).

Send your individual entry via US mail, UPS, or other courier, to arrive starting February 8, 2012, and no later than 5 p.m. on FRIDAY, February 17, 2012 to:

(please address exactly as shown)      SCF Competition  
c/o Susan Broderick  
569 Rodante Way  
Sacramento, CA 95864



**2012 STUDENT CAREER FORUM COMPETITION SPONSORED BY**  
**CALIFORNIA CAPITAL CHAPTER OF NKBA**

The Clients:

Ken and Nancy Livingston are empty nesters, in their mid 50's, with professional careers. They have sold their large family home and have purchased this "California Bungalow" style home that was built in 1927. It is on a large lot with mature landscaping that provides privacy on both sides and the rear of the home. Ken and Nancy want to make the home more comfortable for the two of them until they retire in 10-15 years, when they may sell and relocate to another state. Ken wants a quiet retreat for reading and Nancy needs a place for her laptop and the work she occasionally brings home from the office. They want to keep bedroom 2 as a guest room, but are willing to convert bedroom 3 to the sitting room/office and entry to the master suite. They have some antique family pieces from their old home that will be used in the rest of the house, but all of the furnishings for this space will be new. The Livingstons also have some large scale contemporary oil paintings that need to be incorporated into the design. These are pieces featuring bold primary colors.

Ken and Nancy are both healthy and have no physical challenges other than the typical changes that occur with middle age. Sometimes Ken over does it working in the garden on weekends and suffers from back strain. They both prefer showers to baths. He is 6 feet tall and she is 5'-7" tall. Both are right handed. Nancy wears bifocals and Ken wears contacts. Nancy is admittedly a "klutz" and has requested that grab bars be included in the shower area in case she sprains her ankle again.

The Design Challenge:

The new Master Suite will be an addition to the existing home, as shown on the floor plan. The addition cannot be any larger, or smaller than shown. The windows on the front of the home must be as shown, in order to maintain the California Bungalow look. Interior partitions may be added. Windows must be added to provide egress, light, and ventilation, according to code. The opening from the hall to the living/dining area, existing hall bath, and bedroom 2 must remain as they are. Bedroom 3 and the closets may be incorporated into the Master suite.

The homeowners would like a large walk-in closet and a comfortable bathroom to share. They each require a grooming area with their own sink and storage for typical bathroom items. A large shower with easy to maintain surfaces are a must. Privacy at the toilet area is required, and a bidet should be included, if there is enough room.

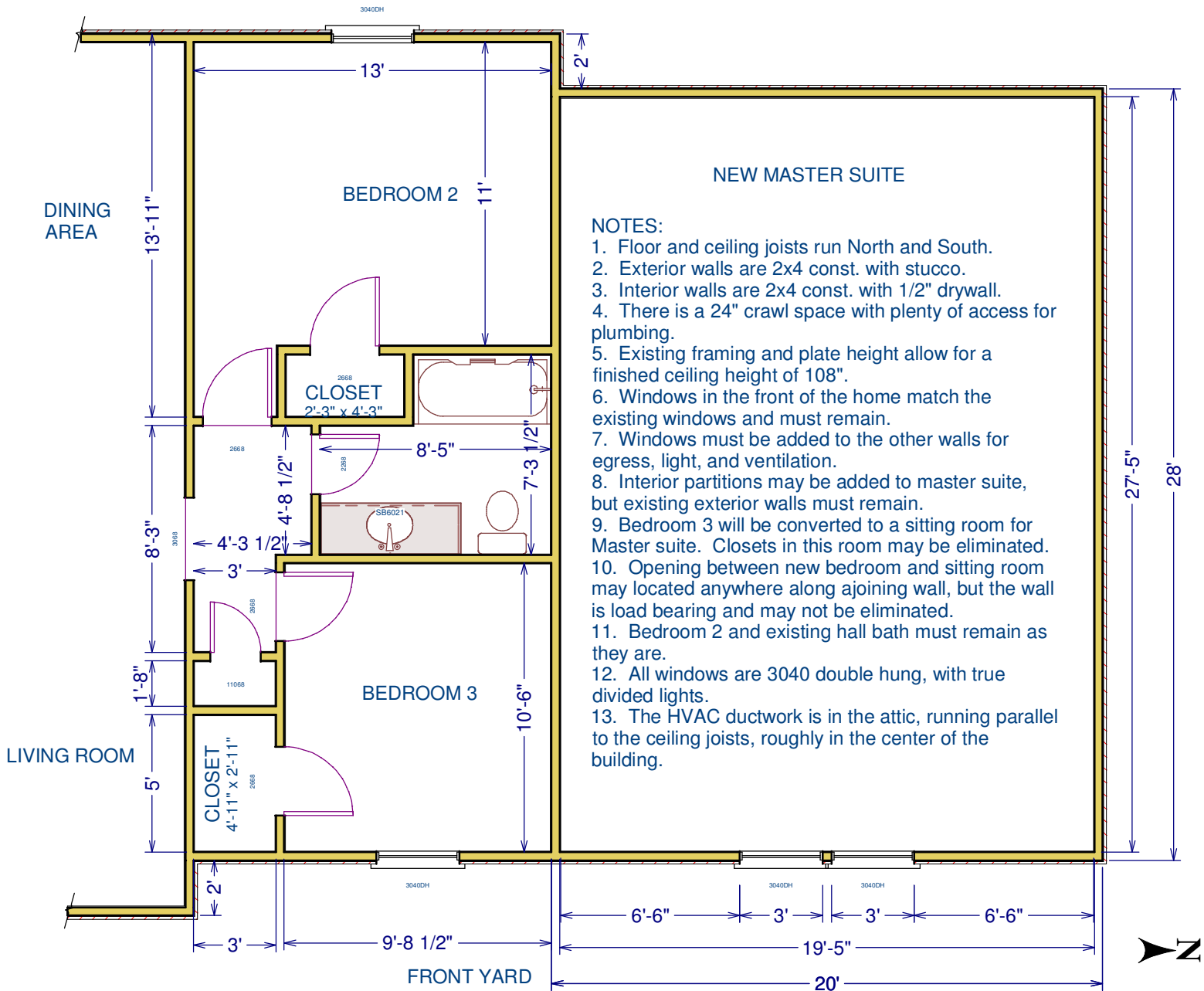
The closet should include space for hanging clothes, shoes, and a built-in ironing board. Folded clothes, underwear, and lingerie will be stored in dressers in the bedroom area.

Construction details:

See notes on the floor plan.



**2012 STUDENT CAREER FORUM COMPETITION SPONSORED BY  
CALIFORNIA CAPITAL CHAPTER OF NKBA**



**EXISTING PLAN**

**NOT TO SCALE**